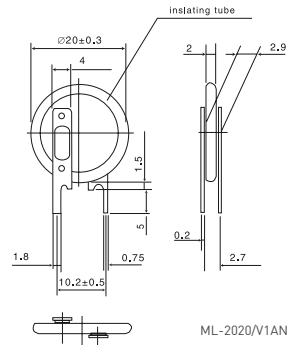


3 MANGANESE RECHARGEABLE LITHIUM BATTERIES (ML SERIES)

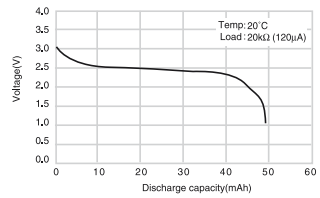
ML-2020



SPECIFICATIONS

| | |
|----------------------------|------------|
| Name | ML-2020 |
| Nominal voltage (V) | 3 |
| Nominal capacity (mAh) | 45 |
| Continuous drain (mA) | 0.12 |
| Operating temperature (°C) | -20 to +60 |
| Weight (g) | 2.2 |

DISCHARGE CHARACTERISTICS



CONSUMPTION CURRENT VS. DURATION TIME

