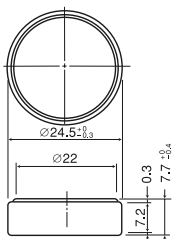


MANGANESE DIOXIDE LITHIUM BATTERIES (CR SERIES)

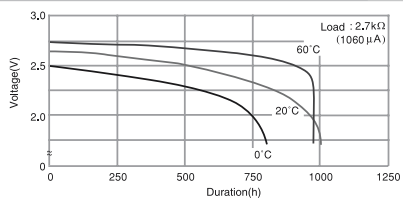
CR-2477



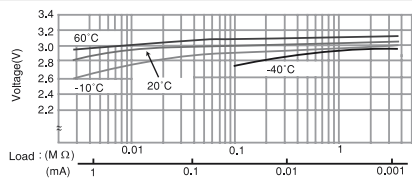
SPECIFICATIONS

Name	CR-2477
Nominal voltage (V)	3
Nominal capacity (mAh)	1,000
Continuous drain (mA)	0.2
Operating temperature (°C)	-30 to +60
Weight (g)	10.5

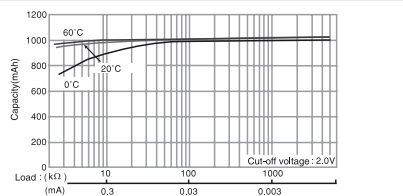
DISCHARGE TEMPERATURE CHARACTERISTICS



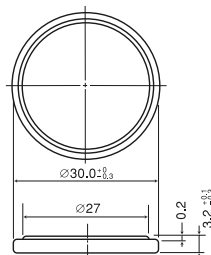
OPERATING VOLTAGE VS. DISCHARGE CURRENT*



CAPACITY VS. LOAD RESISTANCE



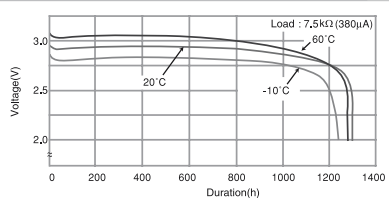
CR-3032



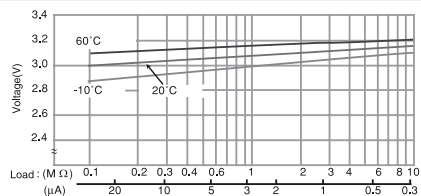
SPECIFICATIONS

Name	CR-3032
Nominal voltage (V)	3
Nominal capacity (mAh)	500
Continuous drain (mA)	0.2
Operating temperature (°C)	-30 to +60
Weight (g)	6.8

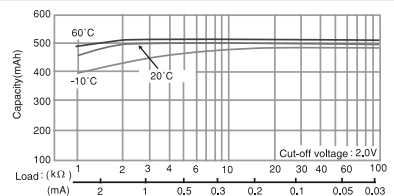
DISCHARGE TEMPERATURE CHARACTERISTICS



OPERATING VOLTAGE VS. DISCHARGE CURRENT*



CAPACITY VS. LOAD RESISTANCE



The data in this document are for descriptive purposes only and are not intended to make or imply any guarantee or warranty.

* Voltage at 50% discharge depth.